

216B/226B/236B Series 3 242B/252B Series 3

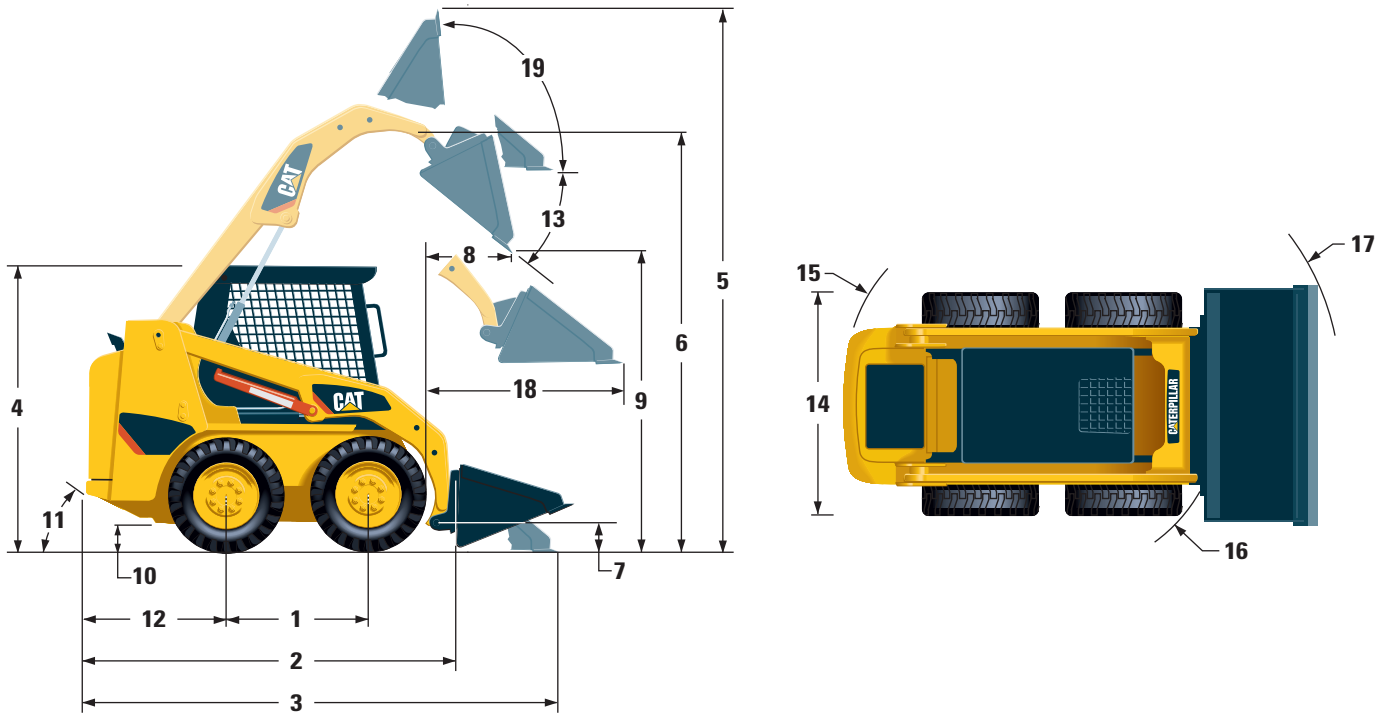
Skid Steer Loaders



	216B Series 3	226B Series 3	236B Series 3	242B Series 3	252B Series 3
Engine					
Engine Model	Cat C2.2	Cat C2.2 T	Cat C3.4 DIT	Cat C3.4 DIT	Cat C3.4 DIT
Net Power (SAE 1349/ISO 9249)	35 kW (47 hp)	42 kW (56 hp)	53 kW (71 hp)	53 kW (71 hp)	53 kW (71 hp)
Weights					
Operating Weight	2581 kg (5,690 lb)	2641 kg (5,822 lb)	3178 kg (7,007 lb)	3179 kg (7,008 lb)	3565 kg (7,861 lb)
Operating Specifications					
Rated Operating Capacity	635 kg (1,400 lb)	680 kg (1,500 lb)	884 kg (1,950 lb)	975 kg (2,150 lb)	1202 kg (2,650 lb)

B-Series 3 Skid Steer Loaders Specifications

Dimensions



	216B/226B Series 3		236B Series 3	
	mm	in	mm	in
1 Wheelbase	986	39	1134	45
2 Length without Bucket	2519	99	2800	110
3 Length with Bucket on Ground	3233	127	3515	138
4 Height to Top of Cab	1950	77	2092	82
5 Maximum Overall Height	3709	146	3965	156
6 Bucket Pin Height at Maximum Lift	2854	112	3099	122
7 Bucket Pin Height at Carry Position	200	8	215	8.4
8 Reach at Maximum Lift and Dump	505	20	541	21
9 Clearance at Maximum Lift and Dump	2169	85.4	2398	94
10 Ground Clearance	195	8	235	9.3
11 Departure Angle	26°		28°	
12 Bumper Overhang Behind Rear Axle	967	38	1038	41
13 Maximum Dump Angle	40°		40°	
14 Vehicle Width over Tires	1525	60	1676	66
15 Turning Radius from Center – Machine Rear	1502	59	1623	64
16 Turning Radius from Center – Coupler	1195	47	1318	52
17 Turning Radius from Center – Bucket	1944	77	2092	82
18 Maximum Reach with Arms Parallel to Ground	1291	51	1353	53
19 Rack Back Angle at Maximum Height	81°		83°	